



Tole Friends' News

JUNE 2007

Welcome to the Tole Friends Newsletter!

ARE YOU OUR NEWSLETTER CELEBRITY FOR JUNE?

Does YOUR name appear in sections and parenthesis somewhere in this newsletter? While reading through this newsletter, if you see your name scattered throughout, it means you are the winner! Contact submissions@tolefriends.net within one week of publication to claim your prize.

As always, new things are happening, and this month is no exception! We know summertime is a busy time of year for everyone with traveling, vacations, conferences, keeping the kids and grandkids entertained until school starts again, etc.; but, we hope you can take the time to see what's happening and not forget us here at Tole Friends.

JUNE FEATURETTE

In each Newsletter, we'd like to draw attention to "one" of our special features found in Tole Friends, and this month we'd like to tell you about our [Painting Links](#) section.

Did you ever try to find a certain designer, wood surface or brush company or hunt for a website only to draw a blank? Tole Friends has the best painting "Directory" any painter could hope to have right at the tip of their fingers. It's the "Links" section, located on the TF's home page, and you'll be amazed at the information contained there. Our "Links" are frequently updated and we take pride in having one of the most complete painting, craft, and art related link sections on the Internet. [Tole Friends - Painting Links](#) Please take a moment to browse this most beneficial area and be sure to bookmark it as you'll find yourself using it more and more.

Organizations of interest to Decorative Painters

The [Decorative Arts Collection](#) (DAC) has a mission to collect and preserve the decorative art of years past. Did you know anyone could be a member? Many painters are unaware of this wonderful organization, which needs the support of every decorative painter.

The DAC is supported by membership fees of \$35.00 a year, donations by individuals, corporations and SDP Chapters. The DAC is a not-for-profit corporation that has been determined by the IRS to be an exempt organization. Contributions are tax-deductible. For a yearly membership fee you will receive a beautiful and exclusive pin for each year of continuous membership. Join and help preserve our wonderful heritage of decorative painting.

The [Society of Decorative Painters](#) (SDP) is another important organization for decorative artists. Membership with SDP will give you six wonderful painting magazines, chockfull of beautiful projects and interesting articles about our art. This magazine cannot be obtained at newsstands and is only available for members of SDP. In addition to the "The Decorative Painter" publication, membership with SDP will also give you discounts in registrations to their annual conference, where classes from many distinguished teachers are available and which has an expo floor equal to none anywhere else in the country.

The discounts obtained by using the [yearly Member Savings Card](#) for shopping from a long list of business member's sites will give you back more than your membership dues with SDP.

If you are not a member and would like to preview this lovely publication, please check out the [free versions on the net](#) .

Conferences

SDP's 35th Annual Conference and Expo in Anaheim, Calif., is just ending now, but [the Heart of Ohio Toile convention](#), in Columbus, Ohio will be held in August. Make plans now to attend, especially if you missed the SDP event.

About Toile Friends

For the decorative artist wishing to keep up with the latest trends, or to continue learning about decorative painting, or just making friends in the painting world, Toile Friends is the place to be. There is a wealth of valuable information waiting for anyone interested in decorative art. Even if you are not a subscribed member, you will find a wealth of information on our "public" site. Using the navigation menu, you will find many of the following TF features:

- Under "Special Features" you will find links to our charity program and an album containing [member's work](#) from lessons and publications.
- The [Memory Box](#) program is a Toile Friends charity and we encourage all to help with the support of this worthy organization that supplies painted boxes to hospitals with infant bereavement programs. These boxes are given to parents who have suffered the recent loss of an infant.
Everyone is welcome to paint one or several boxes and ship these according to the general rules of the Memory Box Program (details are on the site).
As a "thank you" for painted contributions, every year we publish six exclusive designs which are not available anywhere else. Details of how to access these [are on the site](#).
- **Submissions for TF Publications**
We continue to accept submissions for our Publication, [click here for the guidelines](#). It is not mandatory to be a member of Toile Friends in order to submit a project or article for publication.

Do You Advertise with Toile Friends???

Imagine thousands of people each month being able to view YOUR web site with just a click of a button from OUR site. Each button is custom designed either using your artwork or one we design for you. These buttons are very reasonably priced and are on more than 200 of our web pages, and we get a LOT of traffic. The click-through buttons take the user directly to your website. The fee to have your button on our site is only \$60.00 US/year and they are available for any decorative art related site. Buttons can be ordered [through our shopping cart](#).

JOIN US NOW!

To become a member of Toile Friends and be able to participate in all functions on the website (Peg), go to <http://tolefriends.net/signup> . Join in the fun and learning today!

You may join any time during the year and your membership fee will be good for 365 days from when you signed up. Come join us for fun, learning, laughter and sometimes tears. As a registered member you will have access to:

- Our password-protected members pages containing in-depth lessons designed especially for Toile Friend members, articles about the history of decorative painting, painting projects, tips, topic chats, and great decorative painting information.

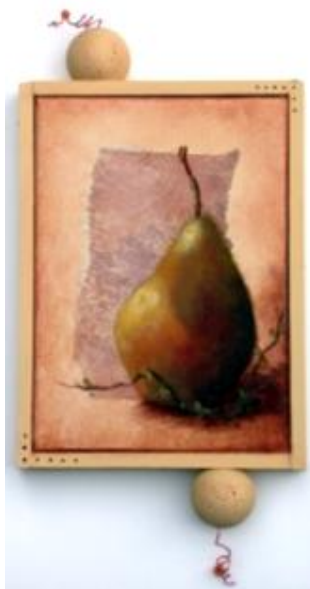
- All of this is available for \$18.00 for the first year, with a discount the second year of membership. You also will become a member of the TF mailing list. Take advantage of this low membership fee to have access to the best decorative painting list and website online. The quarterly Lessons, Publication projects and articles exclusively for members alone are worth the sign up fee.
- The member's mailing list is active, friendly, and you can receive a fast reply to any painting related question almost any time of the day or night. There are several options for receiving the mail from the mailing list. You can receive **individual** messages from other members of Tole Friends in your mailbox and reply to them from your own mailbox, or receive your mail in **digest** form, which includes 8 to 10 messages in one message, or **read and reply from the TF's archives**; the choice of mail delivery is yours.

Subscribing to and receiving this free newsletter does **NOT** include or constitute a membership or subscription to Tole Friends' Association. All of the following items marked with * in this newsletter are **ONLY available to PAID MEMBERS** of Tole Friends' Association. Non-members are welcome to visit our album site to [view photos](#) of previous lessons painted by our members however.

The following lessons and publications are **only part** of all the information that is available for TF members. You must be a paid member in good standing in order to access these areas; they are shown in the newsletter only to let newsletter subscribers know what is available.

Highlights for current and future events are:

Lesson 17 – "Apple and Pear Panels" by Bob Pennycook teaches us a new technique using



newspaper as part of the background preparation. It includes instructions for making the frames.

This lesson will be available until June 30th and then replaced with a lesson by Peni Powell, a small image of our July lesson is already on our homepage <http://tolefriends.com> .

[The lesson can be downloaded by members.](#) *

ARTICLES:

- [Filete Argentino](#) * – an article by María Marta Rossi of Argentine. It tells about the history of this painting style, it's origins in Europe and development into the style that is typical for Buenos Aires, Argentine.
- [Perfect Linework](#) * by Phyllis Tilford, CDA helping us to get our line work to a new level.
- [Product Review](#)-#1; * Nancy Snellen showing us what to do with all those wonderful products and gadgets we bought at one time or always wanted to buy and we do not know how to use.
- [Folk Art History](#) * Barb Franzreb giving us "The World of Rufus Porter".
- [Product Review](#)-#2; * Nancy Snellen giving us more information on what to do with all those wonderful products and gadgets we bought at one time or always wanted to buy and we do not know how to use.
- [Antiquing](#) * A detailed description of two oil antiquing methods by Phyllis Tilford, CDA
- [Product Review](#)-#3; * Nancy Snellen giving us more information on what to do with all those wonderful products and gadgets we bought at one time or always wanted to buy and we do not know how to use.
- [Colored Pencil Technique](#) * Excellent tips and techniques to try out colored pencils by Kelly Hoernig.
- [American Folk Art](#) * By a legend in the decorative painting field, Helen Jeglic. She has illustrated her article with photographs of her wonderful paintings.
- [Product Review](#) * So Soft Fabric Paints and More by DecoArt. Learn all the new things you can do with fabric paints.
- [Product Review](#) * Loew-Cornell gives us an inside look at many newer items and products available today.

PAINTING PROJECTS:

		
Clock in Filete Argentino by María Marta Rossi of Argentina.	Fauxed Table By Betty Caithness	Plums in Gallery Glass By Jan Cumber Of Georgia
		
Santa Ornament By Kathleen Ledford	Morning Glories By Maria Marta Rossi of Argentina	Bentwood Box Lesson By Peni Powell Coming in July
		
	Primitive Folk Art Lesson By Carol Payne Coming in October	

Lessons, articles and projects are only available for a limited time; so do be sure to download them now, while they're still available.

Topic Chats:

We just had a wonderful Chat session about the DAC (Decorative Arts Collection) with Andy Jones, CDA, and Director of the DAC. This session was held after a "contest" to create interest and learn more about the Collection. Teddy Hollenbeck from Reno, Nevada won the contest, which consisted of two wonderful painting surfaces.

A Chat session is a great way to really get to know some of your favorite designers and their styles or techniques or, as in this case, to learn about an important feature of Decorative Painting. Tole Friends holds six chats per year, and the guest speakers are experts on the chosen subject. It's an excellent way to learn, as you ask the questions **you** need to know...not just read about what others **think** you need to know. The chat room is available to guests, and no member's username or password is required, however pre-chat information and chat logs are available only for subscribed members. Won't you join us for the next one?

Our future guest speakers for 2007 are:

- July 2007 Sharon Hamilton, MDA – Topic is: Painting a Realistic Floral
Date will be available soon on our homepage.
- September 2007 Barb Franzreb – Topic is: Designing Contemporary Primitive Folk Art
Date will be available soon on our homepage.
- November 2007 Phyllis Tilford, CDA Topic is Various Blending Techniques
Date will be available soon on our home page.

If you are interested in joining the chat, as a guest or member, simply go to <http://www.tolefriends.com/classroom.html> to read the guidelines and join us. A link to the chat room is provided at the bottom of that page.

Tole Friends' Boutique

Have you visited the Tole Friends boutique at <http://tolefriends.biz>? Sales from this website shop helps provide funds for our educational and publishing programs which benefit our membership. (Lowe, TN) Shopping in our [Boutique](#) is not restricted to members and there are many items all painters will appreciate from painting totes, brush holders, shirts, note cards, bookmarks, to a CD containing 21 beautiful painting projects, just to name a few.



artists.

TF's CD! **What a buy!!!** Designs that only cost \$ 1.20 each!!!! This fabulous offer exists in the Tole Friends boutique and is just one of many items available there. Check out the Fundraiser Combo of painting projects on this CD – something for every level of painting, for every medium, for every style of painting, with 21 projects by 21 designers. This is available as an instant digital download or as a shipped CD. More projects and information and step-by- step worksheets than you would ever receive in any book or magazine!!! The CD consists of projects by many International and well known artists such as Heather Redick, Phyllis Tilford, Nancy Snellen, Moe Shier, Karen Chase and many other wonderful

Check the Boutique often, as many new items are added frequently.

Coming soon:

Future in-depth lessons, painting projects, chats, and publications are shown on [our homepage](#) as they become available. Please check frequently for the most up to the minute happenings!

RENEWAL INFORMATION – IMPORTANT: PLEASE READ.

In April 2007, automatic membership renewals began for the first time, and as a result a major problem ensued and we must now ask for your cooperation in this matter.

1. Members have the option to change their email address in listmail if desired but failing to notify us also of this change so we can we can make the change in the member's database results in not receiving the automatic reminder from the MEMBERS database, **OR** the 2nd notice that we send out manually. The final result is that 20 days after membership expires, listmail will be disabled.
2. It is extremely IMPORTANT that if any TF member changes their email address, they must also notify us via email at membership@tolefriends.net with the following information.

First & Last Name
Old email Address: XXXXX
New email address: XXXXX

RENEWALS WORK AS FOLLOWS:

- The automated system sends each subscribed member a reminder 15 days in advance that membership is running out.
If the member renews through the link in the reminder, their membership will be automatically renewed for 365 days PLUS whatever days are left in their subscription. So if a member renews 14 days before their membership runs out, the database will be updated to 379 days (14 old + 365 new).

If a member does not renew within the mentioned 15 days, the system will remove their name from the database and put it into an "expired members" database.
- Once we find names in the "expired members" database, a second reminder is sent, giving an additional 15 days time to renew.
- If a member still has not renewed after this 2nd reminder, their name and email address will also be removed from the list mail database – the notification mentions that membership has expired. This is automatic and we have no control over it.
- Once a member has been removed from BOTH databases, they will not have access to members nor receive list mail or be able to read from the archives and, if they want to be included in the database again, they need to register as a "new member"
- The price for renewal is \$15.00. New subscriptions cost \$18.00

Tell your painting friends about the newsletter and be sure to share it with all your chapter members, and anyone interested in painting by forwarding this Newsletter to them.

Thanks for reading, and for your support! We'll talk to you again in August!

Tole Friends
<http://tolefriends.com>